

HISTORIA NATURAL

Tercera Serie | Volumen 15 (3) | 2025/137-152

FROM BASELINE TO BREAKTHROUGH: TEN YEARS OF SALTICIDAE INSIGHTS IN MISIONES, ARGENTINA, WITH NEW RECORDS FOR THE COUNTRY

De la línea de base al gran avance: diez años de estudios sobre Salticidae en Misiones, Argentina, con nuevos registros para el país.

Julián E.M. Baigorria^{1,2,3*}, Cristian E. Stolar^{2,4} y Gonzalo D. Rubio^{1,2}

¹National Scientific and Technical Research Council (CONICET), Faculty of Engineering, National University of Misiones (FI-UNaM), Misiones, Argentina.

²Salticidae Research Group of Argentina (GISA).

³Applied Genetics Research Group (GIGA-IBS), Misiones, Argentina.

⁴Cerro Azul Agricultural Experimental Station (EEA-INTA), Misiones, Argentina.

G.D. Rubio grubio@conicet.gov.ar <https://orcid.org/0000-0002-4223-2980>

J.E.M. Baigorria julianbaigorria@gmail.com <https://orcid.org/0009-0005-5888-7411>

C.E. Stolar eric.stolar@gmail.com <https://orcid.org/0000-0003-1946-9709>

* Corresponding author

AZARA
FUNDACIÓN DE HISTORIA NATURAL

umai Universidad
Maimónides

Abstract. Misiones province, in northeastern Argentina, is remarkably biodiverse, housing over 50% of Argentina's flora and fauna within its small area. This richness stems from megadiverse ecoregions: Alto Paraná Atlantic Forest, Araucaria Moist Forests, and Southern Cone Mesopotamian Savannah. A 2014 baseline listed 104 Salticidae species for Misiones, 52% of the number of the entire country then. Subsequent sampling by the Salticidae Research Group of Argentina and a 2018 checklist raised the provincial total to 135 species. This paper adds 72 new species records for the province, including 22 new records for the country.

Key words. Salticidae, Misiones, inventory, new records.

Resumen. La provincia de Misiones, en el noreste de Argentina, es altamente biodiversa, albergando más del 50% de la flora y fauna del país en su área limitada. Esta riqueza se debe a ecorregiones megadiversas como el Bosque Atlántico del Alto Paraná, Selvas Húmedas de Araucaria y los Campos y Malezales. Un estudio base en 2014 registró 104 especies de arañas Salticidae para Misiones, 52% del total del país entonces. Muestreos posteriores y una lista actualizada en 2018 por el Grupo Argentino de Investigación de Salticidae incrementaron el total provincial a 135 especies. Este trabajo reporta 72 nuevas citas de especies para la provincia, incluyendo 22 nuevos registros para Argentina.

Palabras clave. Salticidae, Misiones, inventario, nuevos registros.

INTRODUCTION

The province of Misiones, northeastern Argentina, is one of the most biodiverse regions in the country. Although it is the third smallest among Argentina's provinces, with an area of just under 30,000 km², recent estimates indicate that, despite its small area, Misiones harbors over 50% of Argentina's plant and animal species (Instituto Misionero de Biodiversidad, 2025). This richness is largely attributed to the presence of megadiverse ecosystems and ecoregions, such as the Alto Paraná Atlantic Forest, Araucaria Moist Forests, and the Southern Cone Mesopotamian Savannah (Fig 1) (Zanotti *et al.* 2020, Bauni *et al.* 2021).

In 2014, the first comprehensive baseline list of Salticidae spiders in Misiones was published, by integrating data from museum collections, literature reviews, and field surveys (Rubio 2014). Many of these records corresponded to the collections made by María Elena Galiano and Candido Mello-Leitão in the province, in addition to recent samplings carried out by the authors of this manuscript. At that time, 104 species were recorded, accounting for 52% of all salticid species documented nationwide. Concurrently, the

Salticidae Research Group of Argentina was established, enabling further sampling in previously unexplored areas of the province. An updated checklist was released in 2018 in a book on the salticid spiders of Misiones (Rubio *et al.* 2018), increasing the total to 135 species.

Many of the results obtained during our sampling have been published in various papers and journals (*e.g.* Baigorria & Rubio 2024, Rubio *et al.* 2021, 2022, 2023), but these publications focused primarily on the description of new species rather than on new records of already described species for the country.

In this paper, we present data on 72 newly recorded species for the province, detailing their locations and habitat types, as well as 22 new records for Argentina.

MATERIAL AND METHODS

The checklist was updated from the baseline established in the book "Arañas salticidas de Misiones. Tribus basales" (Rubio *et al.* 2018). All new records obtained in field samplings between 2017 and the publication of this manuscript were integrated to this list, along with species newly described from the province during



Figure 1- Selected images of landscapes of the ecoregions found in Misiones Province: A, Upper Paraná Atlantic Forest, Bio-reserva Karadya, General Manuel Belgrano; B, Araucaria Moist Forest, Cruce Caballero, San Pedro; C, Southern Cone Mesopotamian Savannah, Estancia Santa Cecilia, Candelaria.

this period. Sampling followed the protocols detailed in Rubio *et al.* (2018). Specimens were identified using a Leica DM500 compound microscope and a Leica M60 stereomicroscope, and relevant taxonomic bibliography (Metzner 2025).

Taxa in this checklist are arranged by subfamily and tribe in phylogenetic order, according to Maddison (2015), Rubio *et al.* (2018), Maddison *et al.* (2020); after this, species are alphabetized by genus and by specific epithet to provide rapid access to names. Nomenclature was standardized using the World Spider Catalog (WSC, 2025), with no exceptions. Taxonomic conflicts (if any) were resolved by prioritizing WSC's current classification.

Distribution is presented from north to south, by ecoregion (APAF: Alto Paraná Atlantic Forest, AMF: Araucaria Moist Forest, SCMS: Southern Cone Mesopotamian Savanna), then political department (Ig: Iguazú, MB: General Manuel Belgrano, El: Eldorado, SP: San Pedro, Mo: Montecarlo, Gu: Guaraní, SM: Lib. General San Martín, Ci: Caingúas, SI: San Ignacio, 25: 25 de Mayo, Ob: Oberá, Ca: Candelaria, Cp: Capital, LA: Leandro N. Alem, SJ: San Javier, Ap: Apóstoles, Co: Concepción and then by locality. First country records are indicated by **FstRc**. We provide the collection number of at least one specimen of the species listed and stored in the IBSI-Ar collection. Introduced or non-native species to Argentina are indicated by **Int**.

RESULTS

List of Salticidae recorded at Misiones Province, Argentina:

Lyssomanini Blackwall, 1877.

1. *Lyssomanes austerus* Peckham, Peckham & Wheeler, 1889. APAF, AMF; (Ig): Arroyo Uruguayí Destacamento

Yacu-Poí; Puerto Libertad; (MB): San Antonio; Piñalito.

2. *Lyssomanes belgranoi* Galiano, 1984. AMF; (MB): San Antonio. (Ob): Los Helechos. IBSI-Ar 789.
3. *Lyssomanes leucomelas* Mello-Leitão, 1917. APAF, AMF; (MB): Reserva de Vida Silvestre Uruguayí; Reserva Natural Estricta San Antonio; Bioreserva Karadya (El): Puerto Victoria; (SP): Parque Provincial Cruce Caballero. IBSI-Ar 89.
4. *Lyssomanes miniaceus* Peckham, Peckham & Wheeler, 1889. APAF, AMF; (Ig): Parque Nacional Iguazú; (MB): Reserva de Vida Silvestre Uruguayí; San Antonio; (LA): EEA Cerro Azul. IBSI-Ar 90.
5. *Lyssomanes nigrofimbriatus* Mello-Leitão, 1941. AMF, SCMS; (MB): San Antonio; Piñalito, (SP) Forestal Belga; (Co): Santa María. IBSI-Ar 466.
6. *Lyssomanes pauper* Mello-Leitão, 1945. APAF, AMF, SCMS; (Ig): Parque Nacional Iguazú; Arroyo Uruguayí, Destacamento Yacu-Poí; Puerto Libertad; (El): Puerto Victoria; (MB): Bioreserva Karadya, Bernardo de Irigoyen, Piñalito; (SP): Cruce Caballero; (LA): EEA Cerro Azul; (Co): Santa María. IBSI-Ar 205.
7. *Lyssomanes penicillatus* Mello-Leitão, 1927. APAF, AMF; (Ig): Arroyo Uruguayí, Destacamento Yacu-Poí; (MB): San Antonio; Piñalito; (LA): EEA Cerro Azul. IBSI-Ar 1443.
8. *Lyssomanes tristis* Peckham, Peckham & Wheeler, 1889. APAF, AMF; (Ig): Parque Nacional Iguazú; (MB): Piñalito. IBSI-Ar 1330.
9. *Lyssomanes yacui* Galiano, 1984. APAF; (Ig): Parque Nacional Iguazú; (MB): Bioreserva Karadya, Bdo de Irigoyen; (LA): EEA Cerro Azul. IBSI-Ar 489.

Gophoini Simon, 1901

10. *Ceriumura damborskyae* Rubio & Baigorria, 2016. APAF; (Ig): Parque Nacional Iguazú, Puerto Iguazú (MB): Bioreserva Karadya. IBSI-Ar 172.
11. *Ceriumura intaca* Rubio, Baigorria & Stolar, 2023. APAF; (MB): Bioreserva Karadya; (LA): EEA Cerro Azul. IBSI-Ar 2148.
12. *Ceriumura lacinia* Rubio, Baigorria & Stolar, 2023. APAF; (MB): Bioreserva Karadya. IBSI-Ar 1823.
13. *Colonus alinae* Rubio, Stolar, Baigorria & Baptista, 2023. SCMS. (Co) Concepción de la Sierra.
14. *Colonus germaini* (Simon, 1900). APAF, SCMS; (Ig): Parque Nacional Iguazú; Puerto Iguazú; Puerto Libertad; (MB): Bioreserva Karadya; (LA): EEA Cerro Azul; (SI): San Ignacio; (Ca): Estancia Santa Cecilia, Reserva Urutaú. IBSI-Ar 44.
15. *Colonus gracilis*. Rubio, Stolar, Baigorria & Baptista, 2023. APAF; (LA): EEA Cerro Azul. IBSI-Ar 1297.
16. *Colonus melanogaster*. (Mello-Leitão, 1917). APAF, SCMS. (LA): EEA Cerro Azul; (Ca): Estancia Santa Cecilia, Reserva Urutaú. IBSI-Ar 1606.
17. *Colonus pallidus*. (C. L. Koch, 1846). APAF; (MB): Bioreserva Karadya; (SI): Reserva Osonunú. IBSI-Ar 404.
18. *Colonus robustus* (Mello-Leitão, 1945). APAF; (Ig): Puerto Iguazú; (MB): Bioreserva Karadya; (El): Puerto Victoria. IBSI-Ar 508.
19. *Colonus vaccula* (Simon, 1900). APAF; (Ig): Parque Nacional Iguazú; (MB): Bioreserva Karadya. IBSI-Ar 146.
20. *Cotinusa albescens* Mello-Leitão, 1945. APAF; (El): Puerto Victoria; (MB): Bioreserva Karadya; (LA): EEA Cerro Azul; (Ob): Los Helechos. IBSI-Ar 1439.
21. *Cotinusa cancellata* (Mello-Leitão, 1943). AMF; (SP): Cruce Caballero. IBSI-Ar 1415. **FstRc**.
22. *Cotinusa deserta* (Peckham & Peckham, 1894). APAF; (SI): Reserva Osonunú. IBSI-Ar 1412. **FstRc**
23. *Cotinusa horatia* (Peckham & Peckham, 1894). APAF; (Ig): Puerto Iguazú; (MB): Bioreserva Karadya, RVS Uruguay-í; (LA): EEA Cerro Azul. IBSI-Ar 469.
24. *Cotinusa irregularis* (Mello-Leitão, 1945). APAF; (MB): Bernardo de Irigoyen; (LA): EEA Cerro Azul. IBSI-Ar 1274.
25. *Cotinusa magna*. (Peckham & Peckham, 1894). APAF; (Ig): Puerto Iguazú; (MB): Bioreserva Karadya; (SI): Reserva Osonunú. IBSI-Ar 149.
26. *Cotinusa trifasciata* (Mello-Leitão, 1943). APAF, AMF; (Ig): Parque Nacional Iguazú; (El): Puerto Victoria; (MB): Bioreserva Karadya, RVS Uruguay-í; (SP): Cruce Caballero; (LA): EEA Cerro Azul. IBSI-Ar 129.
27. *Cotinusa vittata* Simon, 1900. APAF, AMF, SCMS; (Ig): Parque Nacional Iguazú; (MB): Bioreserva Karadya, RVS Uruguay-í; (SP): Cruce Caballero; (LA): EEA Cerro Azul; (Ob): Los Helechos; (SI): Reserva Osonunú; (Ca): Estancia Santa Cecilia, Reserva Urutaú. IBSI-Ar 505.

Sitticini Simon, 1901.

28. *Aillutticus nitens* Galiano, 1987. APAF, SCMS; (Ig): Parque Nacional Iguazú; (MB): Bioreserva Karadya; (Ca): Estancia Santa Cecilia. IBSI-Ar 360.
29. *Aillutticus rotundus* Galiano 1987. APAF. (Ob): Oberá. IBSI-Ar 1057. **FstRc**.
30. *Jollas flabellatus* (Galiano, 1989). APAF; (Ig): Puerto Libertad; (SP): Cruce Caballero; (LA): EEA Cerro Azul; (Ca): Estancia Santa Cecilia, Reserva Urutaú; (Co): Santa María. IBSI-Ar 922.
31. *Jollas leucoproctus* (Mello-Leitão, 1944). APAF. (Ig): Parque Nacional

- Iguazú; (MB): Bernardo de Irigoyen. IBSI-Ar 230.
32. *Jollas oklanderæ* Baigorria & Rubio, 2024. SCMS; (Ca): Estancia Santa Cecilia, Reserva Urutaú. IBSI-Ar 2147.
33. *Jollas puntalara* Galiano, 1991. SCMS; (Ap): Apóstoles. IBSI-Ar 953.
34. *Semiopyla viperina* Galiano, 1985. APAF; (Ig): Parque Nacional Iguazú; Puerto Libertad, (LA): EEA Cerro Azul; (Ob): Campo Ramón. IBSI-Ar 208
- Bredini** Madisson, 2015.
35. *Breda apicalis* Simon, 1901. APAF, AMF; (Ig): Parque Nacional Iguazú; Arroyo Urugua-í, Destacamento Yacu-Poí; (MB): Bioreserva Karadya; (SP): Piñalito; (LA): EEA Cerro Azul, (SI): Reserva Osonunú. IBSI-Ar 259
36. *Breda bicruciatæ* (Mello-Leitão, 1943). APAF, AMF, SCMS; (Ig): Parque Nacional Iguazú; (MB): Bioreserva Karadya Reserva de Vida Silvestre Urugua-í; Refugio de Vida Silvestre Caá-Porá; (LA): EEA Cerro Azul; (Co): Santa María. IBSI-Ar 91
37. *Breda bistriata* (C. L. Koch, 1846). SCMS; (Ca): Estancia Santa Cecilia. IBSI-Ar 1405
38. *Breda modesta* (Taczanowski, 1878). APAF, SCMS; (El): Eldorado; (MB): Bioreserva Karadya; (LA): EEA Cerro Azul, (SI): San Ignacio; (Ca): Estancia Santa Cecilia, Reserva Urutaú. IBSI-Ar 92
39. *Breda tristis* Mello-Leitão, 1944. SCMS; (Ca): Estancia Santa Cecilia. IBSI-Ar s/n; JEMB 0038.
- Scopocirini** Simon, 1901.
40. *Gypogyna forceps* Simon, 1900. APAF, SCMS; (LA): EEA Cerro Azul; (Ob): Salto Berrondo; (Co): Santa María; (Ca): Reserva Urutaú. IBSI-Ar 944
41. *Scopocira fuscimana* (Mello-Leitão, 1941). AMF; (SP): Cruce Caballero. IBSI-Ar 1366. **FstRc**
42. *Scopocira histrio* Simon, 1900. APAF, AMF, SCMS; (Ig): Parque Nacional Iguazú; (MB): Bioreserva Karadya, Reserva de Vida Silvestre Urugua-í; San Antonio; (El): Puerto Victoria; (SP): Cruce Caballero; (LA): EEA Cerro Azul; (Ob): Campo Ramón, CIAR; (SI): Reserva Osonunú; (Co): Santa María. IBSI-Ar 151
- Thiodinini** Maddison, 2015.
43. *Arachnomura hieroglyphica* Mello-Leitão, 1917. SCMS; (Ca): Estancia Santa Cecilia. IBSI-Ar s/n; JEMB 0042. **FstRc**
44. *Cylloclania zoobotanica* Bustamante & Ruiz, 2017. AMF;(SP): Cruce Caballero. IBSI-Ar 1370
45. *Hyetussa aguilaris* Galiano, 1978. APAF; (SI): San Ignacio.
46. *Hyetussa mesopotamica* Galiano, 1976. APAF; (SJ): San Javier.
47. *Tartamura adfectuosa* (Galiano, 1977). SCMS; (Ca): Reserva Urutaú. IBSI-Ar 1601
48. *Titanattus andinus* (Simon, 1900). APAF, AMF, SCMS; (Ig): Arroyo Urugua-í, near Puerto Libertad; (MB): Bioreserva Karadya, San Antonio; (SP): Piñalito; (Ob): Salto Berrondo; (Co): Santa María. IBSI-Ar 1598
49. *Titanattus notabilis* (Mello-Leitão, 1943). APAF, SCMS; (SJ): San Javier; (LA): EEA Cerro Azul; (Ca): Estancia Santa Cecilia. IBSI-Ar 936
50. *Titanattus parvus* (Mello-Leitão, 1945). APAF, SCMS; (MB): Bioreserva Karadya; (LA): EEA Cerro Azul; (Ap) Pindapoy. IBSI-Ar 484
51. *Titanattus sciosciae* Rubio, Baigorria & Stolar, 2021. APAF, SCMS. (LA): EEA Cerro Azul, (Ca): Estancia Santa Cecilia. IBSI-Ar 935.

Sarindini Maddison, 2015.

52. *Martella camba* (Galiano, 1969) .
APAF; (Ig): Parque Nacional Iguazú.
53. *Martella utingae* (Galiano, 1967).
APAF; (Ig): Parque Nacional Iguazú.
54. *Paraflluda banksi* Chickering, 1946.
APAF, SCMS; (Ob): Oberá; (LA): EEA Cerro Azul; (Ca): Estancia Santa Cecilia, Reserva Urutaú. IBSI-Ar 1627
55. *Sarinda capibarae* Galiano, 1996.
SCMS; (Ca): Estancia Santa Cecilia. IBSI-Ar 1788. (Fig 2)
56. *Sarinda chacoensis* Galiano, 1996.
APAF, SCMS; (Ig): Parque Nacional Iguazú; (Ca): Estancia Santa Cecilia. IBSI-Ar 609
57. *Sarinda imitans* Galiano, 1965. APAF, SCMS; (Ig): Parque Nacional Iguazú; Puerto Libertad; (LA): EEA Cerro Azul; (Ca): Estancia Santa Cecilia, (Co): Santa María. IBSI-Ar 602.
58. *Sarinda nigra* Peckham & Peckham, 1892. APAF, AMF, SCMS; (Ig): Parque Nacional Iguazú; Arroyo Urugua-í, Destacamento Yacu-Poí; Puerto Libertad; (MB): San Antonio; Bernardo de Irigoyen; Bioreserva Karadya; (LA): EEA Cerro Azul; (SP): Piñalito; (Ca): Estancia Santa Cecilia, Reserva Urutaú; (Co): Santa María. IBSI-Ar 74.
59. *Zuniga magna* Peckham & Peckham, 1892. APAF; (Ob): Oberá.

Simonellini Peckham, Peckham & Wheeler, 1889

60. *Cylistella daphneae* Rubio, Baigorria & Stolar, 2025. AMF; (SP): Piñalito. IBSI-Ar 2000.
61. *Cylistella sanctipauli* Soares & Camargo, 1948. APAF; (Ig): Puerto Iguazú; (MB): Bioreserva Karadya; (LA): EEA Cerro Azul. IBSI-Ar 535.
62. *Erica eugenia* Peckham & Peckham, 1892. APAF; (Ig): Parque Nacional Iguazú. IBSI-Ar 218.
63. *Sympolymnia lauretta* (Peckham &

Peckham, 1892). APAF; (Ig): Puerto Iguazú; (MB): Bioreserva Karadya; (LA): EEA Cerro Azul; (SI): Reserva Osonunú. IBSI-Ar 1717.

64. *Synemosyna aurantiaca* (Mello-Leitão, 1917). APAF, AMF, SCMS; (Ig): Puerto Iguazú; (MB): Bioreserva Karadya, Reserva Natural Estricta San Antonio; (LA): EEA Cerro Azul; (SI): Reserva Osonunú. (Co): Santa María. IBSI-Ar 182.

Huriini Simon, 1901.

65. *Scoturius tigris* Simon, 1901. SCMS; (Co): Santa María.

Amycini Pickard-Cambridge, 1900

66. *Acragas trimaculatus* Mello-Leitão, 1917. APAF; (Ig): Puerto Iguazú; (MB): Bioreserva Karadya. IBSI-Ar 445.
67. *Amycus flavicomis* Simon, 1900. APAF, AMF; (MB): Bioreserva Karadya; (SP): Piñalito; (El): Puerto Victoria. IBSI-Ar 490.
68. *Encolpius guaraniticus* Galiano, 1968. APAF, AMF, SCMS; (Ig): Arroyo Urugua-í, Destacamento Yacu-Poí; Puerto Libertad; (MB): Bioreserva Karadya; (SP): Piñalito; (LA): EEA Cerro Azul; (Co): Santa María. IBSI-Ar 251.
69. *Noegus australis* (Mello-Leitão, 1941). AMF; (SP): Piñalito. IBSI-Ar 1258. **FstRc.**

70. *Noegus bidens* Simon, 1900. APAF, SCMS; (Ig) Puerto Iguazú; (MB): Bioreserva Karadya; (LA): EEA Cerro Azul; (SI): Reserva Osonunú; (Co): Santa María. IBSI-Ar 1435.

71. *Noegus comatulus* Simon, 1900. APAF, AMF; (El): Puerto Victoria; (MB): San Antonio; (SP): Piñalito. IBSI-Ar 1241.

72. *Noegus vulpio* Simon 1900. AMF; (SP): Piñalito, Cruce Caballero. IBSI-Ar 1259. **FstRc.**

73. *Vinnius subfasciatus* (C. L. Koch,

1846). APAF; (MB): Bioreserva Karadya. IBSI-Ar 258.

74. *Vinnius uncatatus* Simon, 1902. APAF, AMF, SCMS; (Ig): Parque Nacional Iguazú; (MB): Bioreserva Karadya; (LA): EEA Cerro Azul; (SI) Reserva Osonunú; (SP): Piñalito, Cruce Caballero; (Ob): Campo Ramón, CIAR; (Ca): Estancia Santa Cecilia, Reserva Urutaú. IBSI-Ar 176.

Myrmarachnini Simon, 1901.

75. *Myrmagua guaranítica* (Galiano 1969). APAF, (Ig): Parque Nacional Iguazú.
76. *Myrmapana panamensis* (Galiano, 1969). APAF; (Ig): Puerto Libertad.

Synagelini

77. *Peckhamia argentinensis* Galiano, 1986. APAF; (Ig): Parque Nacional Iguazú. IBSI-Ar 304.
78. *Peckhamia semicana* (Simon, 1900). AMF; (SP): Piñalito, Cruce Caballero. IBSI-Ar 1384.

Marpisiini Peckham & Peckham, 1894.

79. *Balmaceda nigrosecta* Mello-Leitão, 1945. APAF; (Ig): Parque Nacional Iguazú; Puerto Libertad; (MB): Bioreserva Karadya; (LA): EEA Cerro Azul; (El): Puerto Victoria. IBSI-Ar 198.
80. *Platycryptus magnus* (Peckham & Peckham, 1894). APAF; (Ig): Parque Nacional Iguazú, (MB): Bioreserva Karadya; (LA): EEA Cerro Azul. IBSI-Ar 247.
81. *Psecas chapoda* (Peckham & Peckham, 1894). APAF, SCMS; (SI): San Ignacio; (Co): Santa María; (Ca): Estancia Santa Cecilia, Reserva Urutaú. IBSI-Ar 1558.
82. *Psecas pulcher* Badcock, 1932. APAF, SCMS; (SI): San Ignacio; (Ca): Estancia Santa Cecilia, Reserva Urutaú. IBSI-Ar 1638.
83. *Psecas sumptuosus* (Perty, 1833).

APAF, SCMS; (Ig): Parque Nacional Iguazú; (Ca): Estancia Santa Cecilia. IBSI-Ar 2019.

Dendryphantini Menge, 1879.

84. *Ahijuna patoruzito* Rubio, Baigorria & Stolar, 2022. SCMS; (Ca): Estancia Santa Cecilia. IBSI-Ar 1522.
85. *Avitus longidens* Simon, 1901. APAF, AMF; (El): Puerto Victoria; (SP): Cruce Caballero. IBSI-Ar 1369.
86. *Avitus variabilis* Mello-Leitão, 1945. APAF; (MB): Bioreserva Karadya; (LA): EEA Cerro Azul; (El): Puerto Victoria. IBSI-Ar 412.
87. *Beata aenea* (Mello-Leitão, 1945). APAF, AMF; (Ig): Parque Nacional Iguazú; (MB): Bioreserva Karadya; (LA): EEA Cerro Azul; (SP): Parque Provincial Cruce Caballero. IBSI-Ar 131.
88. *Beata fausta* (Peckham & Peckham, 1901). APAF; (SI): San Ignacio. IBSI-Ar 643.
89. *Beata lucida* (Galiano, 1992). APAF, AMF; (Ig): Parque Nacional Iguazú; (MB): San Antonio. IBSI-Ar 700.
90. *Bellota yacui* Galiano, 1972. APAF, SCMS; (Ig): Parque Nacional Iguazú; (LA): EEA Cerro Azul; (Co): Santa María; (Ca): Estancia Santa Cecilia. IBSI-Ar 178.
91. *Bryantella smaragda* (Crane, 1945). APAF, SCMS; (Ig): Puerto Iguazú; Puerto Bossetti; Arroyo Urugua-í and Route 12 intersection; Puerto Libertad; (25): Colonia Aurora; (MB): Bioreserva Karadya; (LA): EEA Cerro Azul; (Ob): Oberá; (SJ): San Javier; (Co): Santa María. IBSI-Ar 1947.
92. *Chirothecia euchira* (Simon, 1901). APAF, AMF; (Ig): Parque Nacional Iguazú; (MB): San Antonio; (Gu): Reserva de Uso Múltiple Guaraní. IBSI-Ar s/n; JEMB 0045.
93. *Chirothecia semiornata*. Simon, 1901.

- SCMS; (Ca): Estancia Santa Cecilia. IBSI-Ar 1999. (Fig 3) **FstRc**.
94. *Dendryphantès mordax* (C. L. Koch, 1846). SCMS. (Ca): Estancia Santa Cecilia. IBSI-Ar 1520.
95. *Fritzia muelleri* O. P.-Cambridge, 1879. APAF; (Ig): Parque Nacional Iguazú.
96. *Gastromicans albopilosa* (Simon, 1903). APAF; (Ig): Parque Nacional Iguazú; (MB): Bioreserva Karadya. IBSI-Ar 2085.
97. *Gastromicans australis* (Badcock, 1932). SCMS; (Ca): Estancia Santa Cecilia. IBSI-Ar s/n; JEMB 0014.
98. *Gastromicans tessellata* (C. L. Koch, 1846). APAF; (MB): Bernardo de Irigoyen. IBSI-Ar 869.
99. *Gastromicans noxiosa* (Simon, 1886). SCMS; (Ca): Reserva Urutaú. IBSI-Ar 1625. **FstRc**.
100. *Lumptibiella camporum* Rubio, Baigorria & Stolar, 2022. SCMS; (Ca): Estancia Santa Cecilia. IBSI-Ar 1626.
101. *Lumptibiella paranensis* Rubio, Baigorria & Stolar, 2022. AMF; (SP): Piñalito, Cruce Caballero. IBSI-Ar 1705.
102. *Metaphidippus albopilosus* (Peckham & Peckham, 1901). APAF, AMF, SCMS; (MB): Bernardo de Irigoyen; (Ob): Oberá; (Ca): Reserva Urutaú. IBSI-Ar 57.
103. *Metaphidippus fortunatus* Peckham & Peckham, 1901. APAF. (MB): Bioreserva Karadya. IBSI-Ar 483. **FstRc**
104. *Metaphidippus odiosus* (Peckham & Peckham, 1901). SCMS; (Co): Santa María.
105. *Metaphidippus perfectus* (Peckham & Peckham, 1901). APAF, AMF; (Ig): Parque Nacional Iguazú; (MB): Bioreserva Karadya, Bernardo de Irigoyen; (SP) Cruce Caballero. IBSI-Ar 233.
106. *Metaphidippus smithi* (Peckham & Peckham, 1901). APAF; (Ig): Puerto Iguazú; (MB): Bioreserva Karadya; (LA): EEA Cerro Azul; (SI) Reserva Osonunú. IBSI-Ar 67.
107. *Metaphidippus tropicus* (Peckham & Peckham, 1901). APAF; (Ig): Puerto Iguazú; (MB): Bioreserva Karadya. IBSI-Ar 451.
108. *Naubolus posticatus* Simon, 1901. APAF, AMF, SCMS; (Ig): Parque Nacional Iguazú; (MB): Bioreserva Karadya, Bernardo de Irigoyen; (SP) Cruce Caballero; (Gu): Parque Provincial Caá-yarí (Ca): Estancia Santa Cecilia, Reserva Urutaú. IBSI-Ar 224.
109. *Parnaenus cyanidens* (C. L. Koch, 1846). APAF; (Ig): Arroyo Urugua-í, Destacamento Yacú-Poí; (MB): Bioreserva Karadya. IBSI-Ar 389
110. *Parnaenus metallicus* (C. L. Koch, 1846). AMF; (SP): Piñalito, Cruce Caballero. IBSI-Ar 1338.
111. *Phidippus albocinctus* Caporiacco, 1947. SCMS; (Ca): Estancia Santa Cecilia, Reserva Urutaú. (Fig 3). IBSI-Ar 698. **FstRc**
112. *Phidippus zebrinus* Mello-Leitão, 1945. SCMS; (Ap): Pindapoy.
113. *Pseudofluda capandegui* Nadal & Rubio, 2019. SCMS; (Ca): Estancia Santa Cecilia. IBSI-Ar 1521.
114. *Pseudofluda pulcherrima* Mello-Leitão, 1928. APAF, SCMS; (LA): EEA Cerro Azul; (Ca): Estancia Santa Cecilia. IBSI-Ar 1107.
115. *Rudra humilis* Mello-Leitão, 1945. APAF, SCMS; (El): Puerto Victoria; (SJ): San Javier; (Co): Santa María.
116. *Sassacus aurantiacus* Simon, 1901. APAF, AMF; (Ig): Puerto Iguazú; (MB): Bioreserva Karadya. (SP): Piñalito. IBSI-Ar 785.
117. *Sassacus helenicus* (Mello-Leitão, 1943) l. APAF, AMF; (Ig): Puerto Libertad; (SP): Piñalito, Cruce Caballero. IBSI-Ar 2070.
118. *Semora infranotata* Mello-Leitão,

1945. SCMS; (Ca): Reserva Urutaú. IBSI-Ar 1602.
119. *Semorina lineata* Mello-Leitão, 1945. SCMS; (Ap): Pindapoy; (Ca): Estancia Santa Cecilia, Reserva Urutaú.
120. *Tacuna delecta* Peckham & Peckham, 1901. APAF, SCMS; (LA): EEA Cerro Azul; (Co): Santa María. IBSI-Ar-1151.
121. *Zygoballus chekokue* Rubio, Baigorria & Stolar, 2023. SCMS; (Ca): Estancia Santa Cecilia, Reserva Urutaú. IBSI-Ar 1700.
122. *Zygoballus gracilipes* Crane, 1945. APAF, AMF; (Ig): Parque Nacional Iguazú; (MB): Bioreserva Karadya, Bernardo de Irigoyen; (LA): EEA Cerro Azul. IBSI-Ar 60.
123. *Zygoballus melleoleitaoi* Galiano, 1980. APAF; (MB): Bioreserva Karadya; (El): Puerto Victoria. IBSI-Ar 2091.
- Hasariini** Simon, 1903.
124. *Hasarius adansonii* (Audouin, 1826). APAF, SCMS; (Ig): Puerto Iguazú; (Cp): Posadas. IBSI-Ar 66. **Int.**
- Chrysillini** Simon, 1901.
125. *Helvetia albovittata* Simon, 1901. SCMS; (Ca): Estancia Santa Cecilia, Reserva Urutaú. IBSI-Ar 1406.
126. *Helvetia cancrimana* (Taczanowski, 1872). SCMS; (Cp): Posadas. IBSI-Ar 692. (Fig 2).
127. *Helvetia galianoae* Ruiz & Brescovit, 2008. SCMS; (SJ): San Javier.
128. *Helvetia labiata* Ruiz & Brescovit, 2008. APAF; (Ig): Puerto Iguazú. IBSI-Ar 1233. **FstRc.**
129. *Helvetia santarema* Peckham & Peckham, 1894. SCMS; (SJ): San Javier.
130. *Menemerus bivittatus* (Dufour, 1831). APAF, AMF, SCMS; (Ig): Parque Nacional Iguazú; (MB): Bioreserva Karadya, Bernardo de Irigoyen; (LA): EEA Cerro Azul; (Gu): Guaraní; (SI): San Ignacio; (25): Colonia Aurora; (Ob): Oberá. (Cp): Posadas. IBSI-Ar 81.
131. *Theriella tenuistyla* (Galiano, 1970). APAF; (MB): Bioreserva Karadya; (LA): EEA Cerro Azul. IBSI-Ar 1157.
132. *Yepoella crassistylis* Galiano, 1970. APAF, AMF, SCMS; (Ig): Parque Nacional Iguazú; (MB): Bioreserva Karadya; (LA): EEA Cerro Azul; (SP): Piñalito; (Co): Santa María. IBSI-Ar 421.
- Euophryni** Simon, 1901.
133. *Amphidraus argentinensis* Galiano, 1997. APAF; (Ig): Parque Nacional Iguazú.
134. *Asaphobelis physonychus* Simon, 1902. APAF, AMF, SCMS; (Ig): Parque Nacional Iguazú; (MB): Reserva de Vida Silvestre Urugua-í; Reserva Natural Estricta San Antonio; Bioreserva Karadya; (LA): EEA Cerro Azul; (Co): Santa María. IBSI-Ar 82.
135. *Coryphasia albibarbis* Simon, 1902. APAF, AMF; (Ig): Parque Nacional Iguazú; (MB): Reserva Natural Estricta San Antonio, Bioreserva Karadya; (SP) Cruce Caballero; (LA): EEA Cerro Azul. IBSI-Ar 152.
136. *Coryphasia fasciiventris* (Simon, 1902). APAF, AMF; (Ig): Parque Nacional Iguazú; (El): Puerto Victoria; (MB): Reserva Natural Estricta San Antonio, Bioreserva Karadya. IBSI-Ar 127.
137. *Corythalia argentinensis* Galiano, 1962. AMF; (MB): Reserva de Vida Silvestre Urugua-í; San Antonio, Bioreserva Karadya; (SP): Piñalito. IBSI-Ar 1199.
138. *Corythalia conferta* Bayer, Höfer & Metzner, 2020. APAF, SCMS; (Ig): Parque Nacional Iguazú; (MB): Bioreserva Karadya; (LA): EEA Cerro Azul; (SI): Reserva Osonunú; (Ob): Oberá (Ca): Estancia Santa Cecilia, Reserva Urutaú; (Cp): Posadas. IBSI-Ar 965.

139. *Corythalia parva* (Peckham & Peckham, 1901). SCMS; (Ca): Estancia Santa Cecilia; (Ap): Pindapoy. IBSI-Ar 1513. **FstRc.**
140. *Corythalia placata* (Peckham & Peckham, 1901). SCMS; (Ca): Estancia Santa Cecilia; (Cp): Fachinal. IBSI-Ar 1299. **FstRc.**
141. *Corythalia spiralis* (Pickard-Cambridge, 1901). APAF, SCMS; (Ig): Puerto iguazú (MB): Bioreserva Karadya; (LA): EEA Cerro Azul; (Ca): Estancia Santa Cecilia. (Fig3). IBSI-Ar 1181. **FstRc.**
142. *Ilargus carinae* Rubio, Baigorria & Stolar, 2022. APAF; (MB): Reserva de Vida Silvestre Urugua-í, Bioreserva Karadya; (SP) San Pedro. IBSI-Ar 2132.
143. *Ilargus coccineus* Simon, 1901. APAF, AMF; (MB): Bioreserva Karadya, San Antonio; (SP): Piñalito; (Ci): Parque Provincial Salto Encantado; (LA): EEA Cerro Azul; (25): Puerto Londero. IBSI-Ar 1436.
144. *Maeota dichrura* Simon, 1901. APAF, AMF (Ig): Parque Nacional Iguazú; Puerto Iguazú; (MB): Reserva de Vida Silvestre Urugua-í, Bioreserva Karadya; (SP) Cruce Cballero; (Ob): Campo Ramón, CIAR; Oberá; (LA): EEA Cerro Azul. IBSI-Ar 946.
145. *Maeota dorsalis* Zhang & Maddison, 2012. APAF, AMF, SCMS; (Ig): Puerto iguazú (MB): Bioreserva Karadya; (SP): Cruce Caballero; (LA): EEA Cerro Azul; (SI): Reserva Osonunú; (Ca): Estancia Santa Cecilia, Reserva Uru-taú. IBSI-Ar 918.
146. *Maeota flava* Zhang & Maddison, 2012. AMF. (SP): Cruce Caballero. IBSI-Ar 249.
147. *Maeota glauca* Galvis, 2015. APAF. (Ig): Puerto iguazú (MB): Bioreserva Karadya. IBSI-Ar 414.
148. *Marma nigritarsis* (Simon, 1900). APAF, AMF, SCMS; (Ig): Puerto Iguazú; (MB): Bernardo de Irigoyen, Bioreserva Karadya; (Ob): Oberá; (LA): EEA Cerro Azul; (SI): Reserva Osonunú; (Ca): Estancia Santa Cecilia. IBSI-Ar 64.
149. *Mopiopia bruneti* (Simon, 1903). APAF, AMF; (MB): Bioreserva Karadya; (SP): Cruce Caballero (Si): Reserva Osonunú. IBSI-Ar 1254.
150. *Mopiopia comatula* Simon, 1902. APAF, AMF; (Ig): Parque Nacional Iguazú; (MB): Reserva Natural Estricta San Antonio (SI): Reserva Osonunú. IBSI-Ar 186.
151. *Mopiopia gounellei* (Simon, 1902). APAF; (LA): EEA Cerro Azul. IBSI-Ar 1284. **FstRc.**
152. *Mopiopia labyrinthea* (Mello-Leitão, 1947). APAF, AMF; (Ig): Parque Nacional Iguazú; (MB): Reserva de Vida Silvestre Urugua-í; Reserva Natural Estricta San Antonio, Bioreserva Karadya; (Ci): Parque Provincial Salto Encantado; (Ob): Campo Ramón, CIAR. IBSI-Ar 95.
153. *Neonella almita* Hagopían & Simó, 2024. SCMS; (Ca): Estancia Santa Cecilia. IBSI-Ar 2146. (Fig 3). **FstRc.**
154. *Neonella lubrica* Galiano, 1988. APAF. (MB): Reserva de Vida Silvestre Urugua-í, Bioreserva Karadya. IBSI-Ar 355.
155. *Neonella minuta* Galiano, 1965. APAF; (LA): EEA Cerro Azul. IBSI-Ar 1281.
156. *Neonella nana* Galiano, 1988. APAF; (LA): EEA Cerro Azul. IBSI-Ar 1002. **FstRc.**
157. *Saitis cyanipes* Simon, 1901. APAF, AMF; (SP): Piñalito, Cruce Cballero; (LA): EEA Cerro Azul. IBSI-Ar 1047.
158. *Saitis spinosus* (Mello-Leitão, 1945). APAF, AMF, SCMS; (Ig): Puerto Iguazú; Puerto Libertad; (MB): Bioreserva Karadya; San Antonio; Piñalito; (El): Eldorado; (SM): Puerto

- Rico; (LA): EEA Cerro Azul; (SJ): San Javier; (Co): Santa María. IBSI-Ar 424.
159. *Saitis variegatus* Mello-Leitão, 1941. APAF; (Ob): Oberá; (LA): EEA Cerro Azul. IBSI-Ar 1305.
160. *Semnolius rubrolunatus* (Mello-Leitão, 1945). APAF; (El): Puerto Victoria. IBSI-Ar 459.
161. *Yacuitella nana* Galiano, 1999. APAF, AMF; (Ig): Parque Nacional Iguazú; (MB): Bioreserva Karadya, Route 101; (SP): Cruce Caballero. IBSI-Ar 196.
- Aelurillini** Simon, 1901.
162. *Akela ruricola* Galiano, 1999. AMF, SCMS. (SP) Cruce Caballero; (Ca) Reserva Urutaú. IBSI-Ar 1429.
163. *Akela scaloneta* Rubio, Baigorria & Stolar, 2023. APAF, SCMS; (LA): EEA Cerro Azul; (Ca): Estancia Santa Cecilia, Reserva Urutaú. IBSI-Ar 959.
164. *Aphirape ancilla* (C. L. Koch, 1846). APAF. (Ig) Puerto Iguazú. IBSI-Ar 520.
165. *Aphirape boliviensis* Galiano, 1981. APAF, SCMS. (Ob) Oberá; (LA): EEA Cerro Azul; (Ca): Estancia Santa Cecilia, Reserva Urutaú. IBSI-Ar 1572.
166. *Aphirape gamas* Galiano, 1996. APAF, SCMS. (LA): EEA Cerro Azul; (Ca): Estancia Santa Cecilia, Reserva Urutaú; (Ap) Apóstoles. IBSI-Ar 1571.
167. *Aphirape misionensis* Galiano, 1981. APAF, AMF, SCMS; (Ig): Puerto Iguazú; Parque Nacional Iguazú; Puerto Libertad; Puerto Esperanza; (MB): Bioreserva Karadya, Bernardo de Irigoyen; (SP): Piñalito, Tobuna; (Ob): Salto Krysiuk; (SJ): San Javier; (Ca): Estancia Santa Cecilia. IBSI-Ar 141.
168. *Aphirape riojana* (Mello-Leitão, 1941). APAF, SCMS; (Ob) Oberá; (Cp) Posadas. IBSI-Ar 292.
169. *Aphirape riparia* Galiano, 1981. SCMS; (Ca): Estancia Santa Cecilia, Reserva Urutaú. IBSI-Ar 1556.
170. *Aphirape uncifera* (Tullgren, 1905). APAF, SCMS; (LA): EEA Cerro Azul; (Ca): Estancia Santa Cecilia, Reserva Urutaú. IBSI-Ar 1573.
171. *Chira gounellei* (Simon, 1902). AMF, SCMS; (MB): Reserva Natural Estricta San Antonio; (SI) Reserva Osornunú. (Ca): Estancia Santa Cecilia. IBSI-Ar 1401.
172. *Chira ivyatenea* Rubio, Perger, Baigorria, Metzner & Höfer, 2023. SCMS; (Ca): Estancia Santa Cecilia, Reserva Urutaú. IBSI-Ar 1593.
173. *Chira lucina* Simon, 1902. APAF; (25) Colonia Aurora. IBSI-Ar 290. **FstRc**
174. *Chira spinosa* (Mello-Leitão, 1939). APAF, AMF, SCMS; (Ig): Puerto Iguazú; (MB): Reserva de Vida Silvestre Urugua-í; San Antonio, Bioreserva Karadya, Bernardo de Irigoyen; (SP): Piñalito; (El): Puerto Victoria; (Ob): Oberá; (LA): EEA Cerro Azul; (Ca): Estancia Santa Cecilia, Reserva Urutaú. IBSI-Ar 9.
175. *Chira thysbe* Simon, 1902. APAF, SCMS; (Ig): Parque Nacional Iguazú; (LA): EEA Cerro Azul; (Ca): Estancia Santa Cecilia. IBSI-Ar 158.
176. *Freya nigrotaeniata* (Mello-Leitão, 1945). APAF, SCMS; (Ig): Puerto Iguazú; (Ca): Estancia Santa Cecilia. IBSI-Ar 71.
177. *Frigga coronigera* (C. L. Koch, 1846). APAF; (Ig): Puerto Iguazú; (El): Puerto Victoria.
178. *Frigga quintensis* (Tullgren, 1905). APAF, AMF, SCMS; (Ig): Puerto Iguazú; Arroyo Urugua-í; Puerto Libertad; (MB): Bioreserva Karadya, San Antonio; Bernardo de Irigoyen; (25): Colonia Aurora; (Ob): Oberá; (LA): EEA Cerro Azul; (Ca): Estancia Santa Cecilia, Reserva Urutaú; (Cp): Posadas; (Co): Santa María. IBSI-Ar 23.
179. *Hisukattus transversalis* Galiano,

1987. APAF. (Ig): Puerto Iguazú. IBSI-Ar 362.
180. *Hisukattus tristis* (Mello-Leitão, 1944). SCMS. (Ca): Reserva Urutaú. IBSI-Ar 1585.
181. *Megafreya sutrix* (Holmberg, 1875). APAF, AMF, SCMS (Ig): Puerto Iguazú; (El): Puerto Victoria; (MB): Bioreserva Karadya, San Antonio; Bernardo de Irigoyen; (25): Colonia Aurora; (Ob): Oberá; (LA): EEA Cerro Azul; (Gu): Guaraní; (SI): San Ignacio; (Ca): Estancia Santa Cecilia, Reserva Urutaú; (Cp): Posadas. IBSI-Ar 1638.
182. *Nycerella aprica* (Peckham & Peckham, 1896). APAF; (Ig): Puerto Iguazú; Puerto Libertad; Puerto Esperanza; (MB): Bioreserva Karadya; (LA): EEA Cerro Azul; (SP) Cruce Caballero; (Gu): RUMG. IBSI-Ar 488.
183. *Pachomius areteguazu* Rubio, Stolar & Baigorria, 2021. APAF, SCMS. (LA): EEA Cerro Azul; (Ca): Estancia Santa Cecilia, Reserva Urutaú. IBSI-Ar 1112.
184. *Pachomius misionensis* (Galiano, 1995). APAF, AMF; (Ig): Puerto Iguazú; (El): Puerto Victoria; (MB): Bioreserva Karadya; (LA): EEA Cerro Azul; (Gu): Guaraní; (SI): San Ignacio; Reserva Osonunú. IBSI-Ar 978.
185. *Pachomius palustris* Rubio, Baigorria & Stolar, 2021. SCMS. (Ca): Estancia Santa Cecilia, Reserva Urutaú. IBSI-Ar 1524.
186. *Pachomius patellaris*. (Galiano, 1995). APAF. (Ig): Puerto Iguazú. IBSI-Ar 961. **FstRc**.
187. *Pachomius rubrogastrus* Pett, Rubio & Stolar, 2021. APAF, SCMS. (MB): Bioreserva Karadya, Bernardo de Irigoyen; (LA): EEA Cerro Azul; (Ca): Estancia Santa Cecilia, Reserva Urutaú. IBSI-Ar 227.
188. *Phiale gratiosa* C. L. Koch, 1846. APAF, AMF, SCMS; (Ig): Parque Nacional Iguazú; Arroyo Urugua-í; Puerto Libertad; (MB): Bioreserva Karadya, Reserva Natural Estricta San Antonio; (SP) Piñalito; (El): Puerto Victoria; (LA): EEA Cerro Azul; (SI): San Ignacio; (Ap): Pindapoy; (Co): Santa María; (Ca): Estancia Santa Cecilia, Reserva Urutaú. IBSI-Ar 168.
189. *Phiale guttata* (C. L. Koch, 1846). APAF. (Ig): Puerto Iguazú; (MB): Bioreserva Karadya. IBSI-Ar 402.
190. *Phiale quadrimaculata* (Walckenaer, 1837). APAF, AMF; (MB): San Antonio; (El): Puerto Victoria.
191. *Phiale roburifoliata* Holmberg, 1875. SCMS. (Ca): Estancia Santa Cecilia. IBSI-Ar s/n; JEMB 0012. (Fig 2).
192. *Phiale tristis* Mello-Leitão, 1945. APAF, AMF, SCMS; (Ig): Parque Nacional Iguazú; Puerto Iguazú; Puerto Esperanza; Arroyo Urugua-í and Route 12 intersection; (MB): Bioreserva Karadya, Reserva de Vida Silvestre Urugua-í; San Antonio; (SP) Piñalito; (El): Puerto Victoria; (LA): EEA Cerro Azul; (Co): Santa María. IBSI-Ar 137.
193. *Philira micans* (Simon, 1902). APAF, SCMS; (Ig): Parque Nacional Iguazú; (MB): Bioreserva Karadya; (SI) Reserva Osonunú; (Ca): Estancia Santa Cecilia, Reserva Urutaú. IBSI-Ar 75.
194. *Sumampattus quinqueradiatus* (Taczanowski, 1878). APAF, AMF, SCMS; (Ig): Parque Nacional Iguazú; Puerto Iguazú; Puerto Libertad; (MB): Bioreserva Karadya; (SP) Cruce Caballero; (LA): EEA Cerro Azul; (Ca) Reserva Urutaú. IBSI-Ar 70.
195. *Sumampattus verae* Marta, Figueiredo & Rodrigues, 2023. SCMS; (Ca): Estancia Santa Cecilia. IBSI-Ar 1543. **FstRc**
196. *Trydarssus pantherinus* (Mello-Leitão, 1946). SCMS. (Ca) Reserva Urutaú. IBSI-Ar 1583.
197. *Tullgrenella brescoviti* Estol, Marta & Rodrigues, 2020. SCMS. (Ca) Reserva Urutaú. IBSI-Ar 1590. **FstRc**.

198. *Tullgrenella guayapae* Galiano, 1970. APAF, SCMS. (Ig): Puerto Iguazú; (Ob) Oberá; (Ca) Profundidad. IBSI-Ar 314.
199. *Tullgrenella yungae* Galiano, 1970. APAF, AMF, SCMS (Ig): Puerto Libertad; (MB): Bioreserva Karadya, Bernardo de Irigoyen; (Ob) Oberá; (Ca): Estancia Santa Cecilia. IBSI-Ar 123.
200. *Wedoquella apnea* Rubio, Nadal & Edwards, 2019. APAF. (LA): EEA Cerro Azul. IBSI-Ar 1160.
201. *Wedoquella denticulata* Galiano, 1984. APAF, AMF; (Ig): Parque Nacional Iguazú; Puerto Esperanza; (MB): Bioreserva Karadya, San Antonio; (LA): EEA Cerro Azul. IBSI-Ar 496.
202. *Wedoquella karadya* Rubio, Baigorria & Edwards, 2019. APAF. (MB): Bioreserva Karadya. IBSI-Ar 802.
203. *Wedoquella macrothecata* Galiano, 1984. APAF, AMF, SCMS; (Ig): Parque Nacional Iguazú; Puerto Libertad; Puerto Esperanza; (MB): Bioreserva Karadya, Reserva Natural Estricta San Antonio; (SP): Piñalito, Cruce Caballero, Tobuna; (Gu): RUMG; (LA): EEA Cerro Azul; (SJ): San Javier; (Ca): Estancia Santa Cecilia; (Co): Santa María. IBSI-Ar 181.
204. *Wedoquella punctata* (Tullgren, 1905). APAF, AMF; (Ig): Parque Nacional Iguazú; Puerto Libertad; (MB): Bioreserva Karadya, San Antonio; (LA): EEA Cerro Azul; (SJ): San Javier. IBSI-Ar 983.
- Plexippini** Simon, 1901.
205. *Habronattus paratus* (G. W. Peckham & E. G. Peckham, 1896). SCMS. (Ca): Santa Cecilia, Reserva Urutaú. IBSI-Ar 1584. **Int.**
206. *Plexippus paykulli* (Audouin, 1826). APAF, AMF, SCMS; (MB): Bernardo de Irigoyen; (Ob): Oberá; (LA): EEA Cerro Azul; (Ca): Estancia Santa Cecilia. IBSI-Ar 58. **Int.**

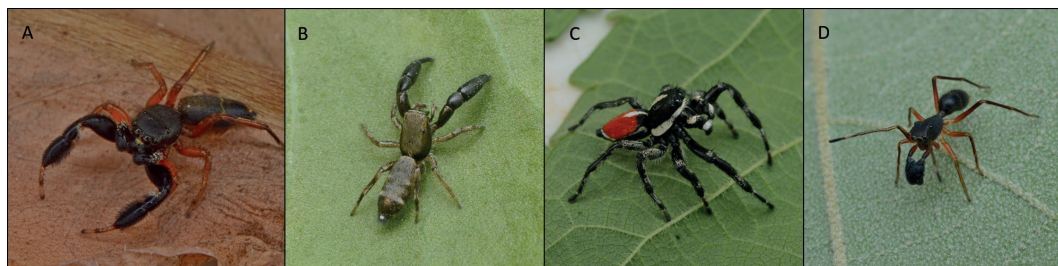


Figure 2- New records for Misiones: **A**, *Breda tristis* ♂ ; **B**, *Helvetia cancrimana* ♂ ; **C**, *Phiale roburifoliata* ♂ ; **D**, *Sarinda capibarae* ♂ .



Figure 3- New records for Argentina: **A**, *Neonella almita* ♀ ; **B**, *Corythalia spiralis* ♀ ; **C**, *Phidippus albocinctus* ♂ ; **D**, *Chirothecia semiornata* ♀ .

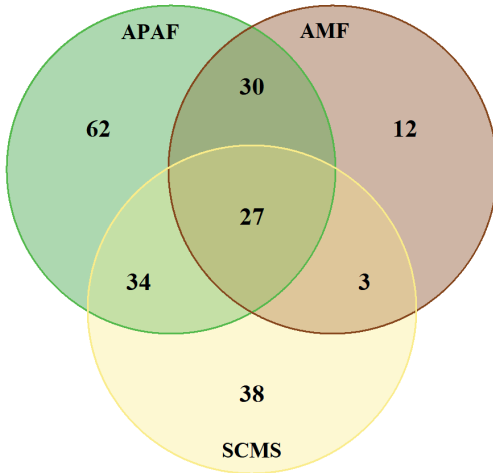


Figure 4- Number of species found in each of the sampled ecoregions. APAF: Alto Paraná Atlantic Forest; AMF: Araucaria Moist Forest; SCMS: Southern Cone Mesopotamian Savanna.

DISCUSSION

The province of Misiones has recorded a total of 206 species of spiders belonging to the Salticidae family, representing 68% of the total number of species recorded in the country. According to the Argentine Spider Catalog (Catálogo de Arañas de Argentina 2025), the total number of species listed to date is 279, and after this work, the total has been updated to 301. Regarding their presence in the three ecoregions present in the province, the APAF recorded a total of 153 species, while the AMF recorded 72 and the SCMS 102. Of the total, 112 species (55%) were found in only one of the ecoregions (62 APAF, 12 AMF, 38 SCMS), while 67 (32%) were present in at least two ecoregions, and 27 (13%) were found in all the ecoregions analyzed (fig 1). The results suggest a close relationship that salticid spiders have with a particular type

of environment, and their potential consideration as bioindicators. Species that occur in more than one ecoregion were always collected in habitats with the same vegetation type. For example, while species such as *Akela scaloneta* and *Aphirape gamas* were reported from locations where forest environments predominate, these particular species were collected in areas with natural or established pastures found in those locations. The opposite is also true for species much more common in the Atlantic forest zone, such as *Encolpius guaraniticus*, *Noegus bidens*, and *Bellota yacui*, which were collected in the Atlantic forest fragments often found scattered throughout the grassland matrix of the SCMS. This habitat and microhabitat selection have already been documented on many salticids species worldwide (Nelson 2023, Guseinov, 2003; Wesołowska & Cumming, 2004, Huseynov, 2008, Baigorria & Rubio 2024, Rubio *et al.* 2021, 2022, 2023).

As a final conclusion, we would like to emphasize the importance of comprehensive and sustained biodiversity monitoring in order to know more realistic numbers of richness of species inhabiting a given region and thus identify priority areas for conservation or management. Furthermore, biodiversity inventories can be a powerful tool for understanding the impact of land-use change over time, and the use of species or groups such as jumping spiders as bioindicators can be of great help in quantifying these changes.

ACKNOWLEDGMENTS

We would like to thank all the people and Institutions who have supported our studies throughout these years, specially to our families, the Consejo Nacional de Investigaciones Científicas y Técnicas (CONICET), Fundación Temaikén, and the

Intituto Misionero de Biodiversidad (IMiBio). We would especially like to thank the Fundación de Historia Natural Félix de Azara for providing the microscope that JEMB is using and used in this study.

REFERENCES

- Baigorria, J. E. y Rubio, G. D. (2024) *Jollas oklanderæ* n. sp., a new beetle-like spider from Northeast Argentina (Araneae: Salticidae: Sitticini). *Peckhamia* 324 (1): 1-8.
- Bauni, V., Bertonatti, C. & Giacchino, A. (2021). *Inventario biológico argentino: Vertebrados / 1a ed.* - Ciudad Autónoma de Buenos Aires: Fundación de Historia Natural Félix de Azara, 537 pp.
- Catálogo de Arañas de Argentina (2025). Catálogo de Arañas de Argentina. Museo Argentino de Ciencias Naturales "Bernardino Rivadavia", online at <https://sites.google.com/site/catalogodearanas-deargentina/>, Accessed 10/08/2025.
- Guseinov, E. F. (2003). Natural prey of the jumping spider *Menemerus semilimbatus* (Hahn, 1827) (Araneae: Salticidae), with notes on its unusual predatory behaviour. *European Arachnology*, 93-100.
- Huseynov, E. F. (2008). Natural prey of the jumping spider *Philaeus chrysops* (Araneae: Salticidae) in different types of microhabitat. *Arachnology*, 14(6): 262-268.
- Instituto Misionero de Biodiversidad (2025). *Informe de la Biodiversidad de Misiones*. Instituto Misionero de Biodiversidad (IMiBio), Misiones, Argentina. 33 pp.
- Nelson, X. J. (2023). A road map of jumping spider behavior. *The Journal of Arachnology*, 51(2), 139-154.
- Maddison, W. P. (2015). A phylogenetic classification of jumping spiders (Araneae: Salticidae). *Journal of Arachnology* 43(3): 231-292.
- Maddison, W. P., Maddison, D. R., Derkarabetian, S. y Hedin, M. (2020). Sitticine jumping spiders: phylogeny, classification, and chromosomes (Araneae, Salticidae, Sitticini). *ZooKeys* 925: 1-54.
- Metzner, H. (2025). Jumping spiders (Arachnida: Araneae: Salticidae) of the world. . Online at <https://www.jumping-spiders.com>. Accessed 10/08/2025
- Rubio, G. D. (2014). Baseline richness of Salticidae (Araneae) from Misiones, Argentina. *Peckhamia* 118 (1): 1-21.
- Rubio, G. D., Baigorria, J. E. y Scioscia, C. (2018). *Arañas salticidas de Misiones. Guía para la identificación (tribus basales)*. 1a ed. Universidad Maimónides: Ediciones Fundación Azara, Ciudad Autónoma de Buenos Aires. 211 pp.
- Rubio, G. D., Baigorria, J. E. M. y Stolar, C. E. (2021). A new species of *Pachomius* Peckham & Peckham (araneae: salticidae), inhabiting a river-bank of northern argentina. *Historia Natural*, Tercera Serie 11 (2): 141-149.
- Rubio, G. D., Baigorria J. E. M. y Stolar, C. E. (2022). Two new genera and four new species of jumping spiders (Araneae: Salticidae: Dendryphantini). *Species* 23 (71): 193- 206.
- Rubio, G. D., Baigorria, J. E. M. y Stolar, C. E. (2023). Unveiling some unknown jumping spiders (Araneae: Salticidae) from Argentina: descriptions of seven new species. *Peckhamia* 294 (1): 1-22.
- Wesolowska, W. y Cumming, M. S. (2004). A re-description and natural history of *Hyllus treleaveni* Peckham et Peckham, 1902, the largest jumping spider in Africa [Araneae: Salticidae]. *Annales zoologici* 54 (3).
- World Spider Catalog. 2025. World Spider Catalog. Version 26. Natural History Museum Bern, online at <http://wsc.nmbe.ch>, accessed on 1/06/2025. doi: 10.24436/2
- Zanotti, C. A., Keller H. A. y Zuloaga, F. O. (2020). Biodiversidad de la flora vascular de la provincia de Misiones, región Paranaense Argentina. *Darwiniana*, nueva serie, 8(1), 42-291.

Recibido: 07/07/2025 - Aceptado: 15/09/2025 - Publicado: 20/12/2025